



Healthcare IT
&
Services

Yugamiru cloud

How to install Manual



This manual provides information on how to use this product, including important points to remember in order to prevent any problems.

Please read this user manual carefully and use this product safely.

After reading this manual, make sure to store it in an accessible place where you can refer back to it easily.

Powered by
FLEXMeasure

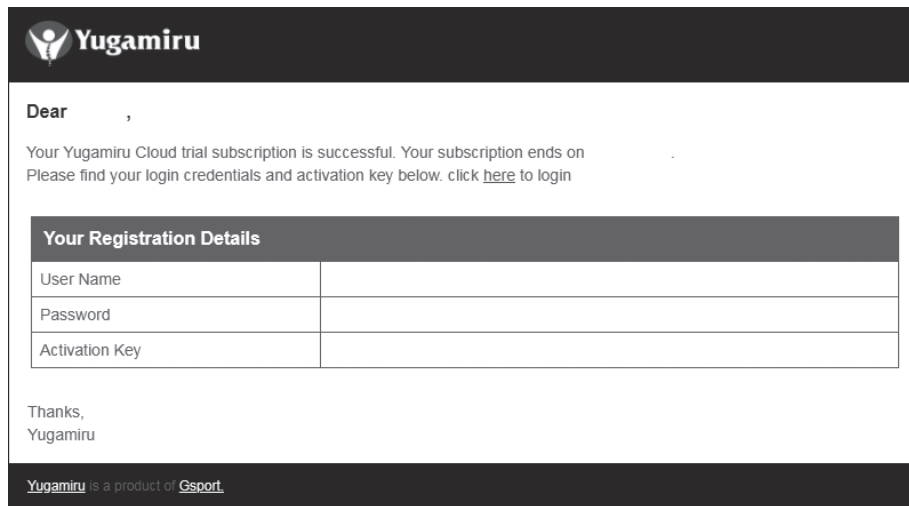
0. Table of Contents

0. Table of Contents	02
1. Trial	03
– Key information	03
– Log-in and download	04
– Install software	05
– Subscription from Trial	06
2. Subscribe	07
– Key information	07
– Log-in and download	08
– Install software	09
– Renewal	10
3. View license	11
4. Release license	12
5. Question about the product	13

1. Trial

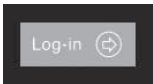
You have registered to Yugamiru Cloud Trial, thank you very much.

● Key information



You will be able to find your Trial activation key, your Username and Password in the email called "Yugamiru-Trial Registration success".

● Log-in and download



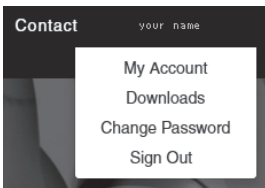
To download the software, you have to log-in into your account in the website *yugamiru.net* .

To log-in, you can click on the button "log-in" in the top left corner of the website.

Login

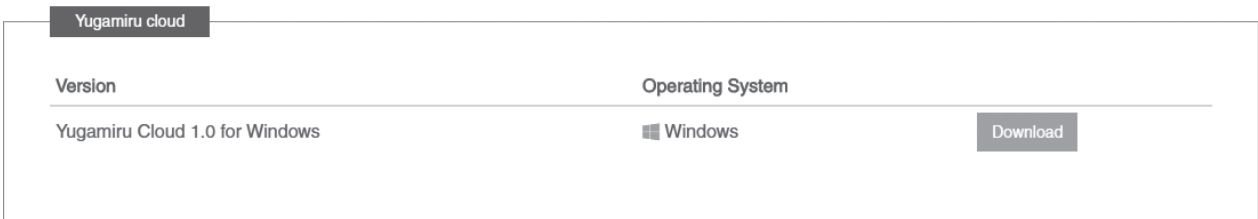
The image shows a 'Subscriber Login' form. It has a title bar 'Subscriber Login'. Below it are two input fields: 'E-mail' and 'Password'. Below the input fields is a 'Login' button. At the bottom of the form are two links: 'New Subscriber?' and 'Forgot Password?'.

Once you have clicked on the log-in button, you will be directed to the log-in page where you can enter your log-in information to access your account.



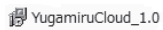
Next, you have logged-in, in the top left corner of the website, you will be able to see your name instead of the log-in button. You can move your mouse over your name, then a small window will pop. In this window, there is a button called "Downloads", you can click on it.

Download



Once you have clicked on "Download", you will be directed to the download page. In this page, you can click on the button "Download", then the software will be downloaded on your computer.

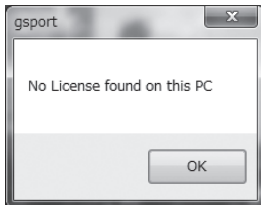
● Install software



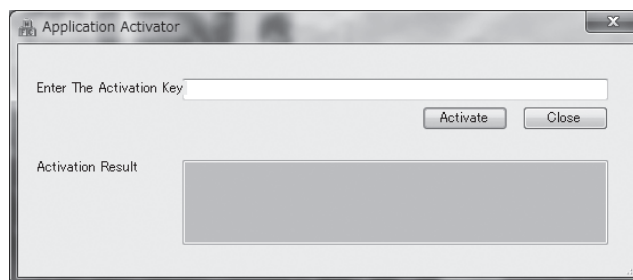
When the download is over, double click on the installer called "YugamiruCloud_1.0" to install the software.



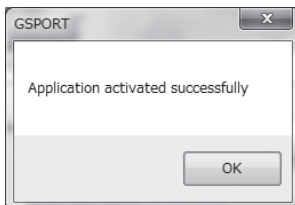
After the software installation, you can click on the icon named "Yugamiru Cloud" to launch the software.



A first window will open with the message "No license found on PC", you can click on "OK".



A second window will open, in it, there is a space called "Enter the activation key", in the blank space, you have to enter your Trial activation key, then click on "Activate".



If your activation key is valid, a window will open with the message "Application activated successfully", then click on "OK".

The software will launch by itself.

Congratulation, you are now able to use Yugamiru Cloud for your trial period.

● **Subscription from Trial**

Once the trial period is over or during your trial period, you can subscribe to Yugamiru Cloud in the website *yugamiru.net* .

In the website, you can click on the button "Renew subscription" or "Subscribe" to subscribe to Yugamiru Cloud.

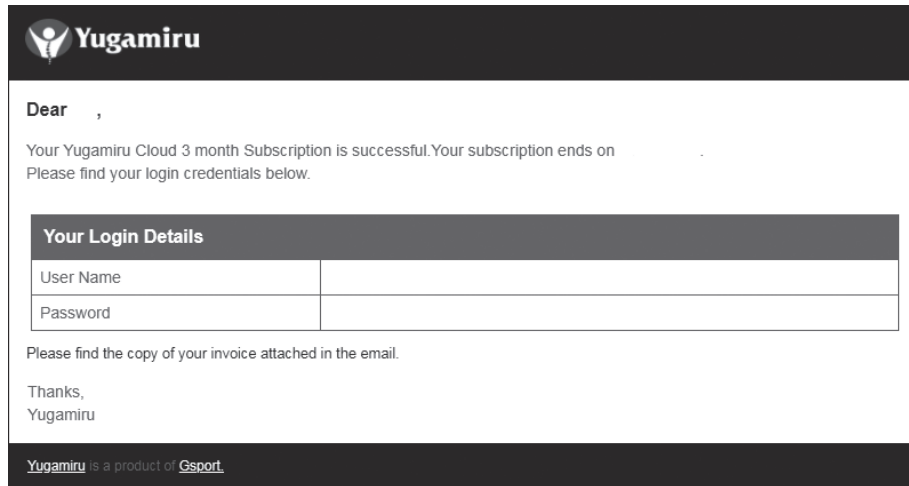
Once you have subscribe to Yugamiru Cloud, your Trial activation key will be updated automatically for a full version activation key. If you had some time left in your trial version, it will be added to your subscription time.

You will also receive more information by email with the emails named "Yugamiru-Subscription and Invoice" and "Yugamiru Activation Key details".

2. Subscribe

You have registered to Yugamiru Cloud, thank you very much.

● Key information



Yugamiru

Dear ,

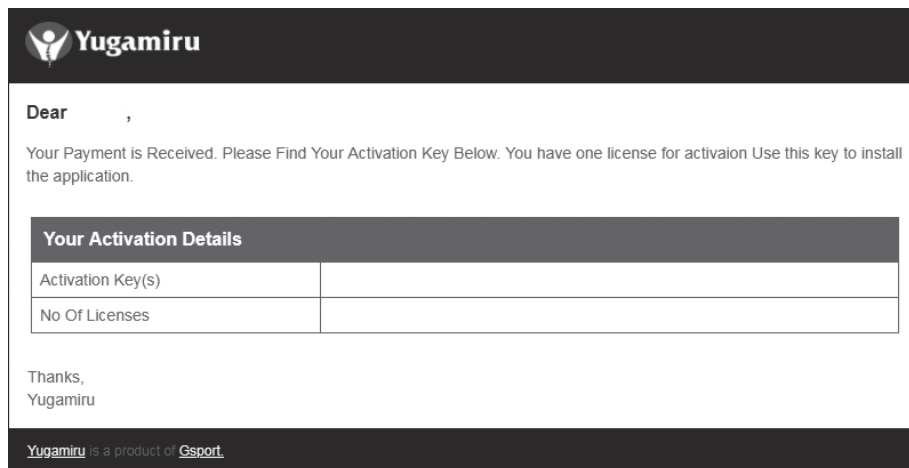
Your Yugamiru Cloud 3 month Subscription is successful. Your subscription ends on .
Please find your login credentials below.

Your Login Details	
User Name	
Password	

Please find the copy of your invoice attached in the email.

Thanks,
Yugamiru

Yugamiru is a product of [Gsport](#).



Yugamiru

Dear ,

Your Payment is Received. Please Find Your Activation Key Below. You have one license for activation Use this key to install the application.

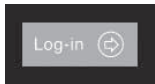
Your Activation Details	
Activation Key(s)	
No Of Licenses	

Thanks,
Yugamiru

Yugamiru is a product of [Gsport](#).

You will be able to find your Activation key, your Username and Password in the emails called "Yugamiru-Subscription and Invoice" and "Yugamiru Activation Key details".

● Log-in and download



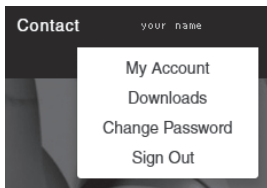
To download the software, you have to log-in into your account in the website *yugamiru.net* .

To log-in, you can click on the button "log-in" in the top left corner of the website.

Login

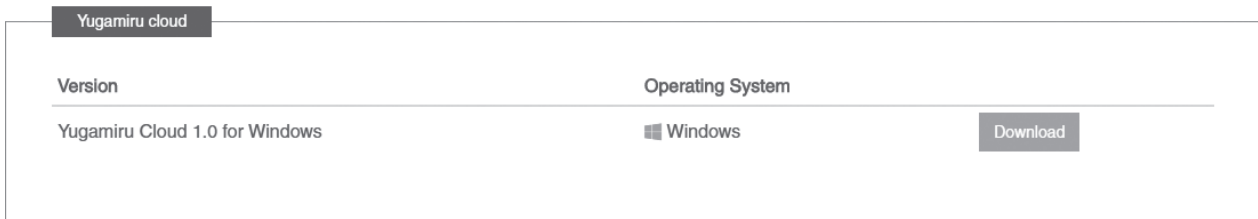
The image shows a 'Subscriber Login' form. It has a title bar 'Subscriber Login'. Below it are two input fields: 'E-mail' and 'Password'. Below the input fields is a 'Login' button. At the bottom of the form are two links: 'New Subscriber?' and 'Forgot Password?'.

Once you have clicked on the log-in button, you will be directed to the log-in page where you can enter your log-in information to access your account.



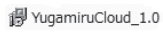
Next, you have logged-in, in the top left corner of the website, you will be able to see your name instead of the log-in button. You can move your mouse over your name, then a small window will pop. In this window, there is a button called "Downloads", you can click on it.

Download



Once you have clicked on "Download", you will be directed to the download page. In this page, you can click on the button "Download", then the software will be downloaded on your computer.

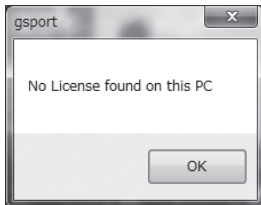
● Install software



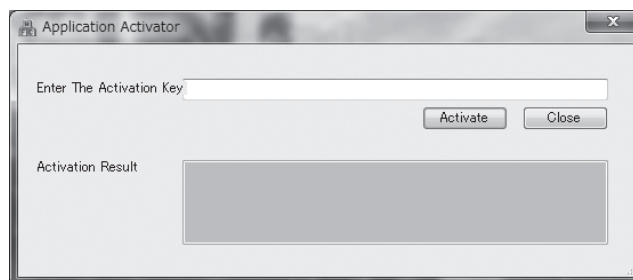
When the download is over, double click on the installer called "YugamiruCloud_1.0" to install the software.



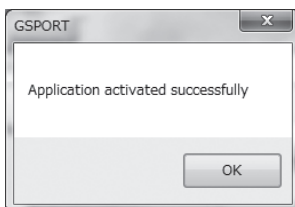
After the software installation, you can click on the icon named "Yugamiru Cloud" to launch the software.



A first window will open with the message "No license found on PC", you can click on "OK".



A second window will open, in it, there is a space called "Enter the activation key", in the blank space, you have to enter your Activation key, then click on "Activate".



If your activation key is valid, a window will open with the message "Application activated successfully", then click on "OK".

The software will launch by itself.

Congratulation, you are now able to use Yugamiru Cloud for your subscription period.

● Renewal

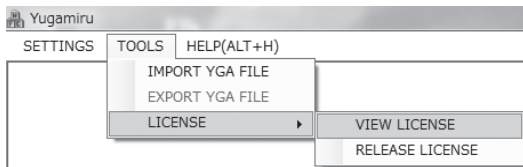
Once the subscription period is over or during your subscription period, you can subscribe to Yugamiru Cloud in the website *yugamiru.net* .

In the website, you can click on the button "Renew subscription" or "Subscribe" to subscribe to Yugamiru Cloud.

Once you have subscribe to Yugamiru Cloud, your Activation key will be updated automatically for the new period of time.

If you had some time left in your previous subscription, it will be added to your subscription time. You will also receive more information by email with the emails named "Yugamiru-Subscription and Invoice" and "Yugamiru Activation Key details".

3. View license

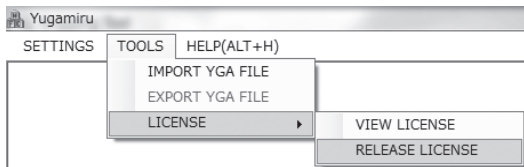


You can view your license in Tool > License > View license.

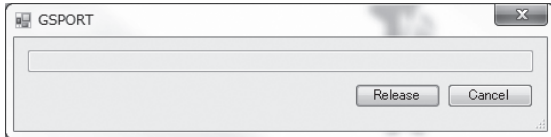


In this window, you will be able to find your activation key, expiry date and number of days left.

4. Release license



You can release your license from your computer in Tool > License > Release license.



In this window, you will be able to find your activation key. You can click on "Release" to release your key from your computer.

You can, then, install Yugamiru Cloud in an other computer and reuse your activation key to use the software.

5. Question about the product

? Inquiries

If you have any question, do not hesitate to contact us at :
customer_yugamiru_cloud@gsport.co.jp .
Please note that it may take us a few days to respond to your inquiry.

● The Information Desk

gsport,inc.

.....
*5th floor Otyanomizu Plaza Building,
11-3-1 Yusima, Bunkyo-ku, Tokyo 113-0034, Japan*
.....

<http://www.gsport.co.jp/>
.....

e-mail : customer_yugamiru_cloud@gsport.co.jp



**Healthcare IT
&
Services**